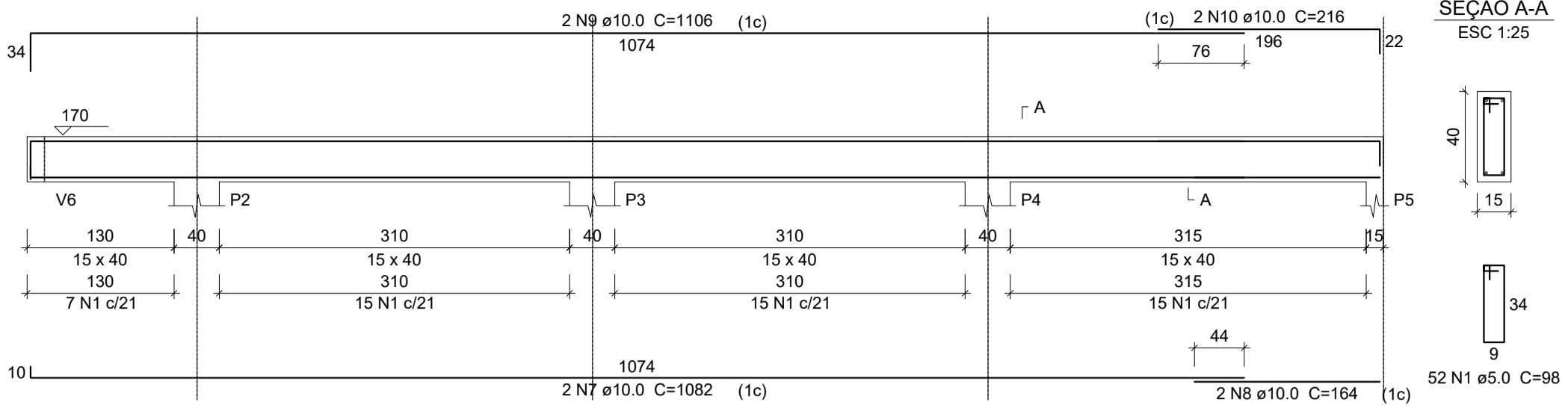
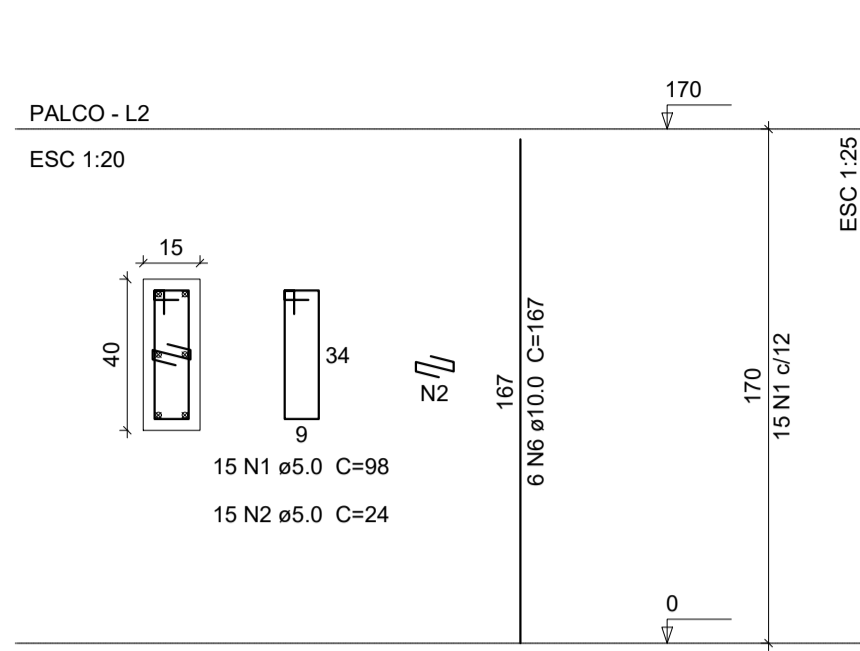
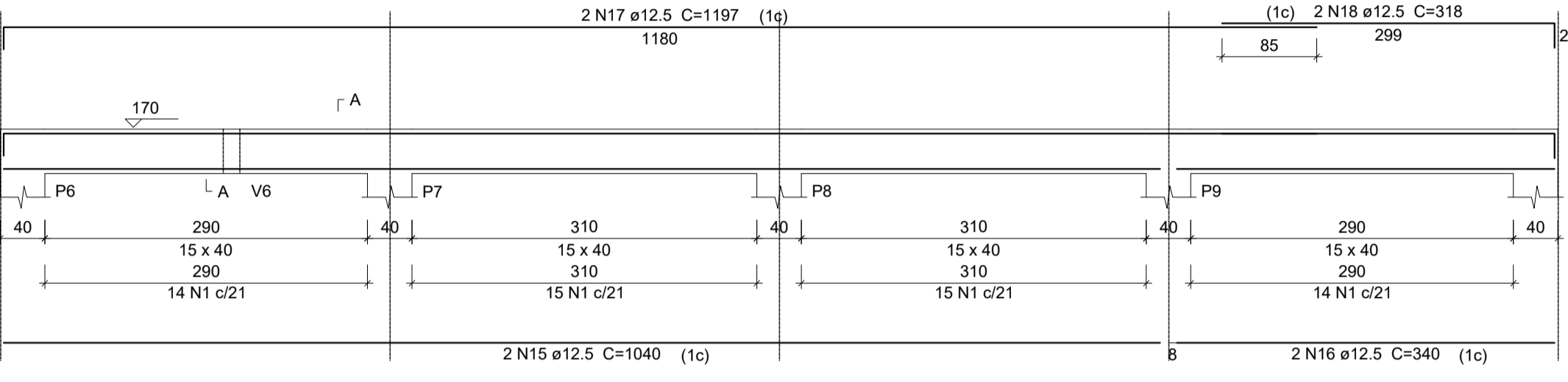


P1=P2=P3=P4=P5=P6=P7=P8=P9=P10=P11=P12  
 =P13=P14=P15=P16=P17=P18=P19=P20

V1  
 ESC 1:50

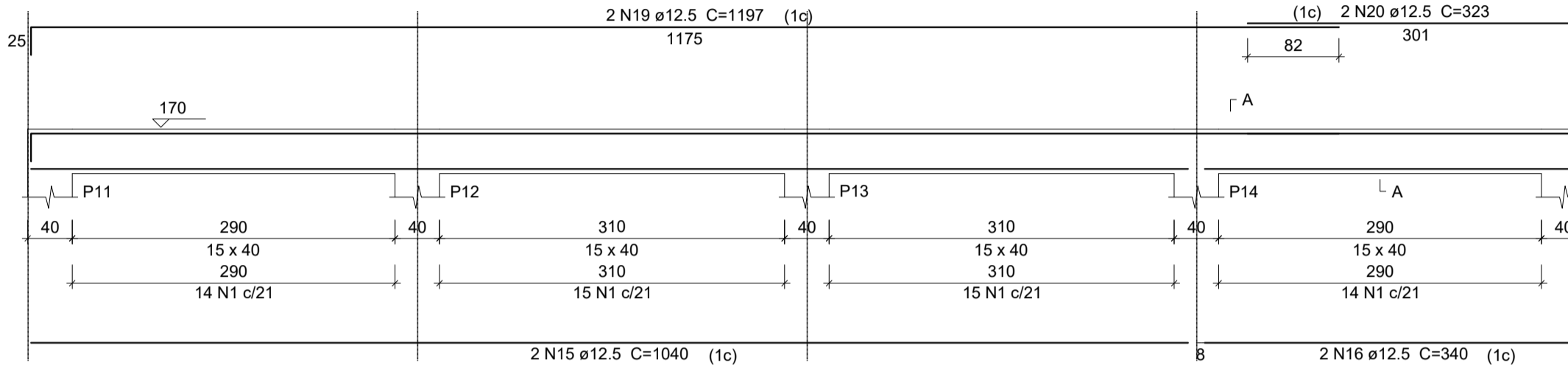


V2  
 ESC 1:50



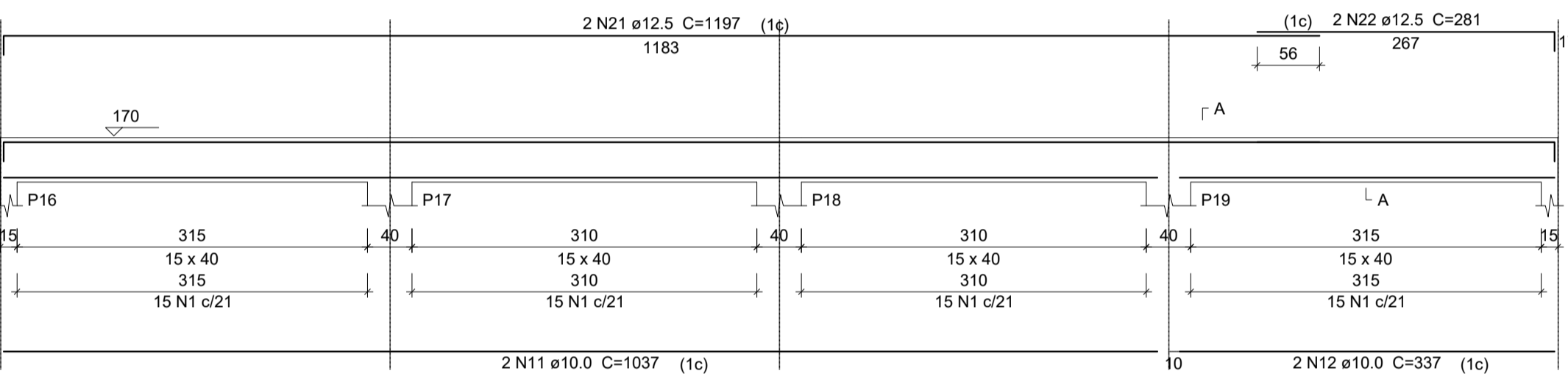
SEÇÃO A-A  
 ESC 1:25

V3  
 ESC 1:50



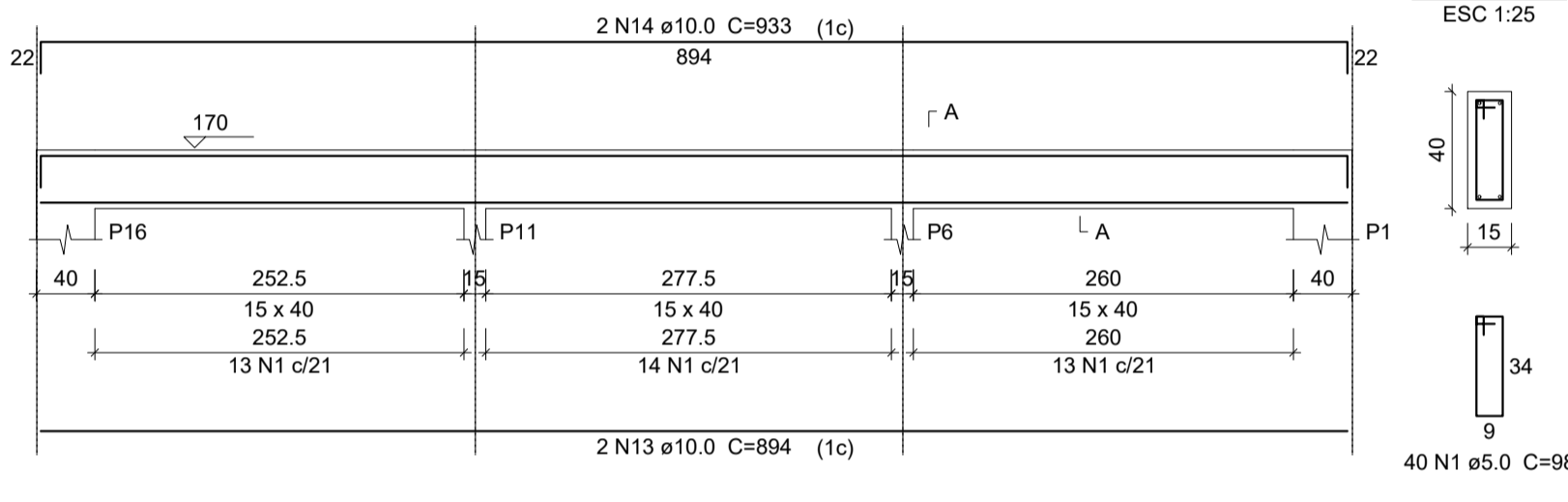
SEÇÃO A-A  
 ESC 1:25

V4  
 ESC 1:50



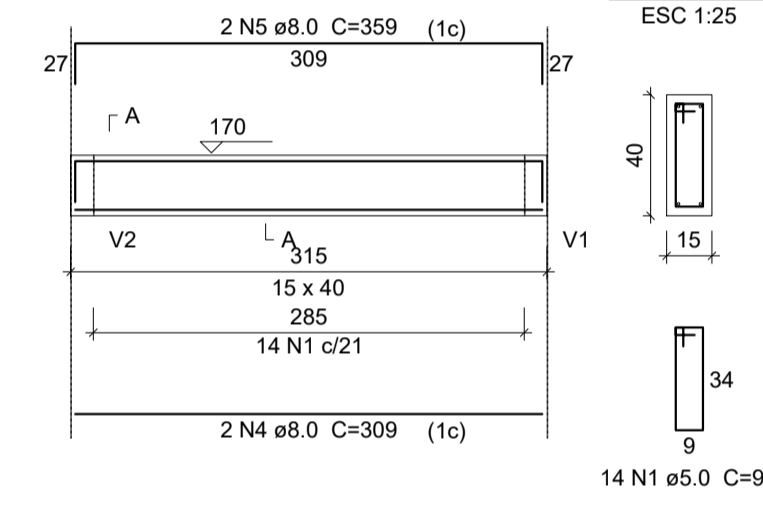
SEÇÃO A-A  
 ESC 1:25

V5  
 ESC 1:50



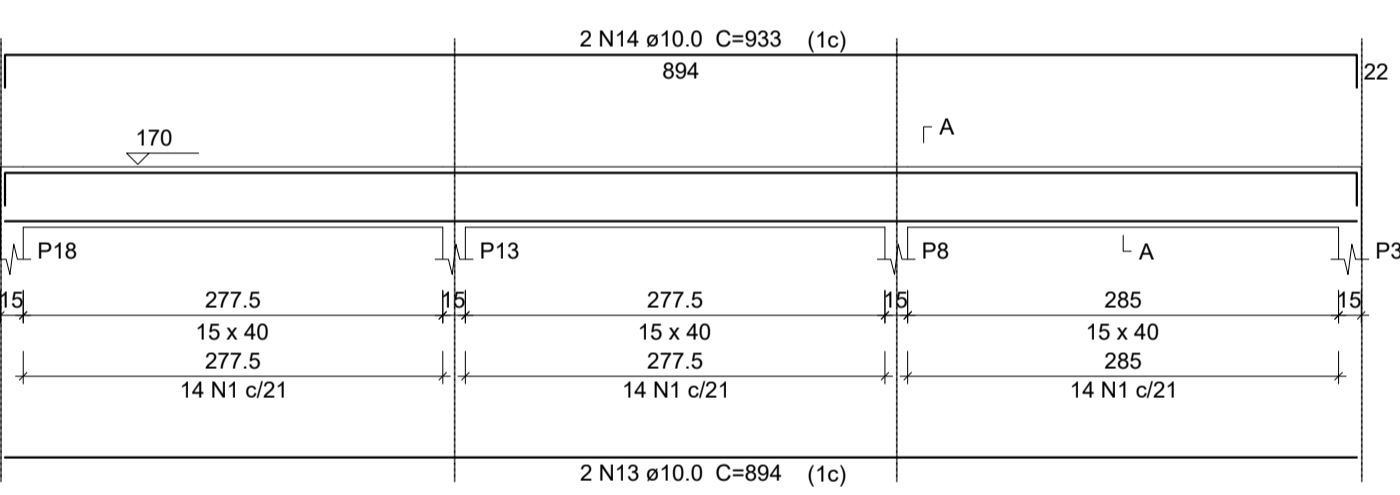
SEÇÃO A-A  
 ESC 1:25

V6  
 ESC 1:50



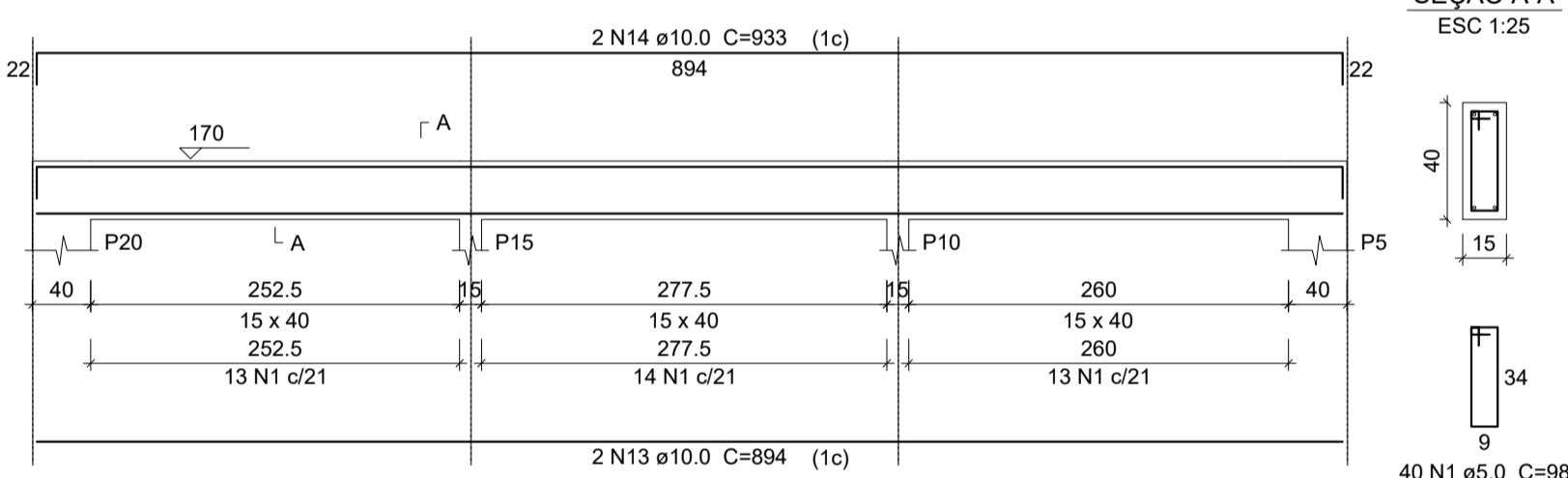
SEÇÃO A-A  
 ESC 1:25

V7  
 ESC 1:50

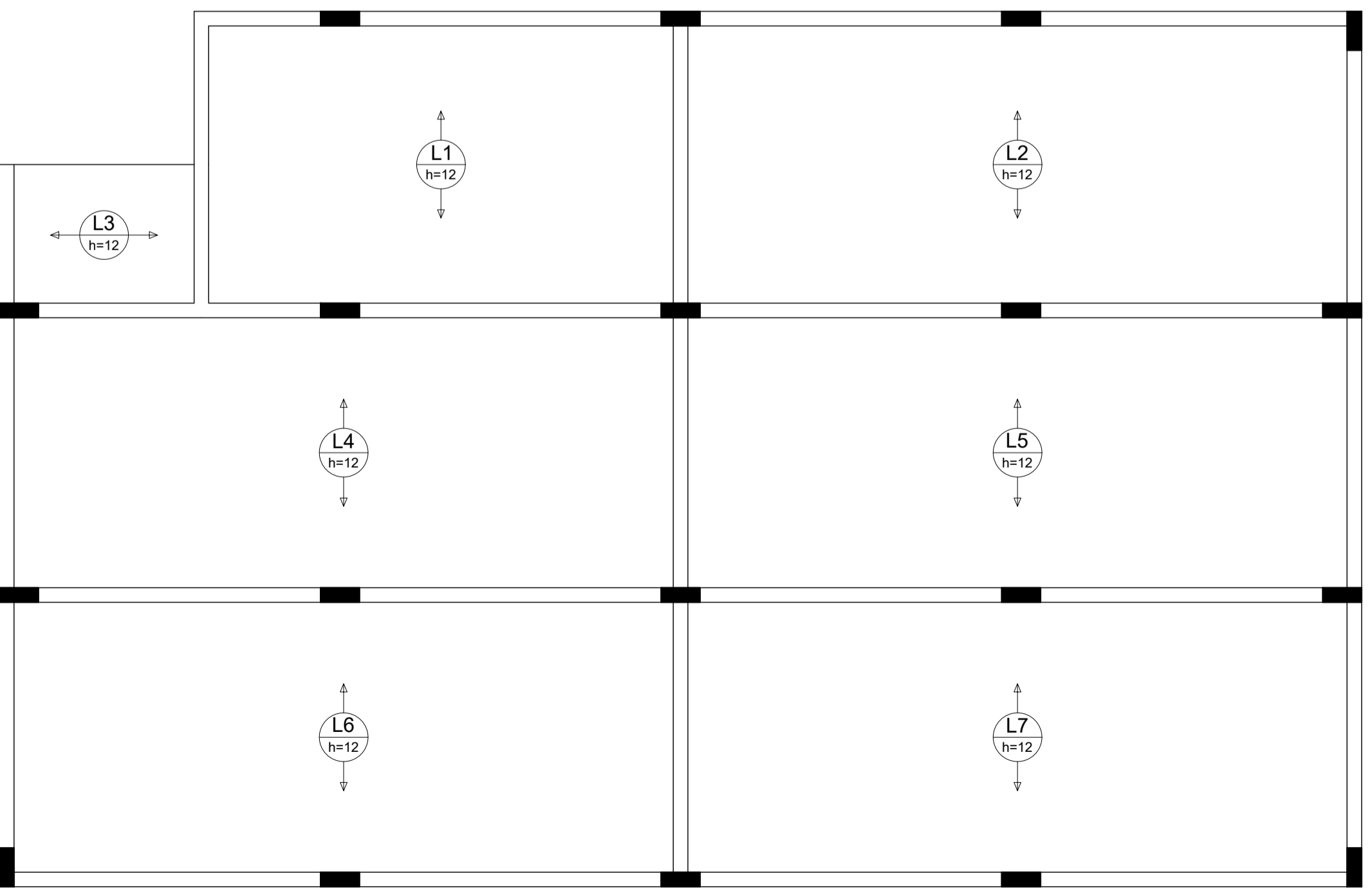
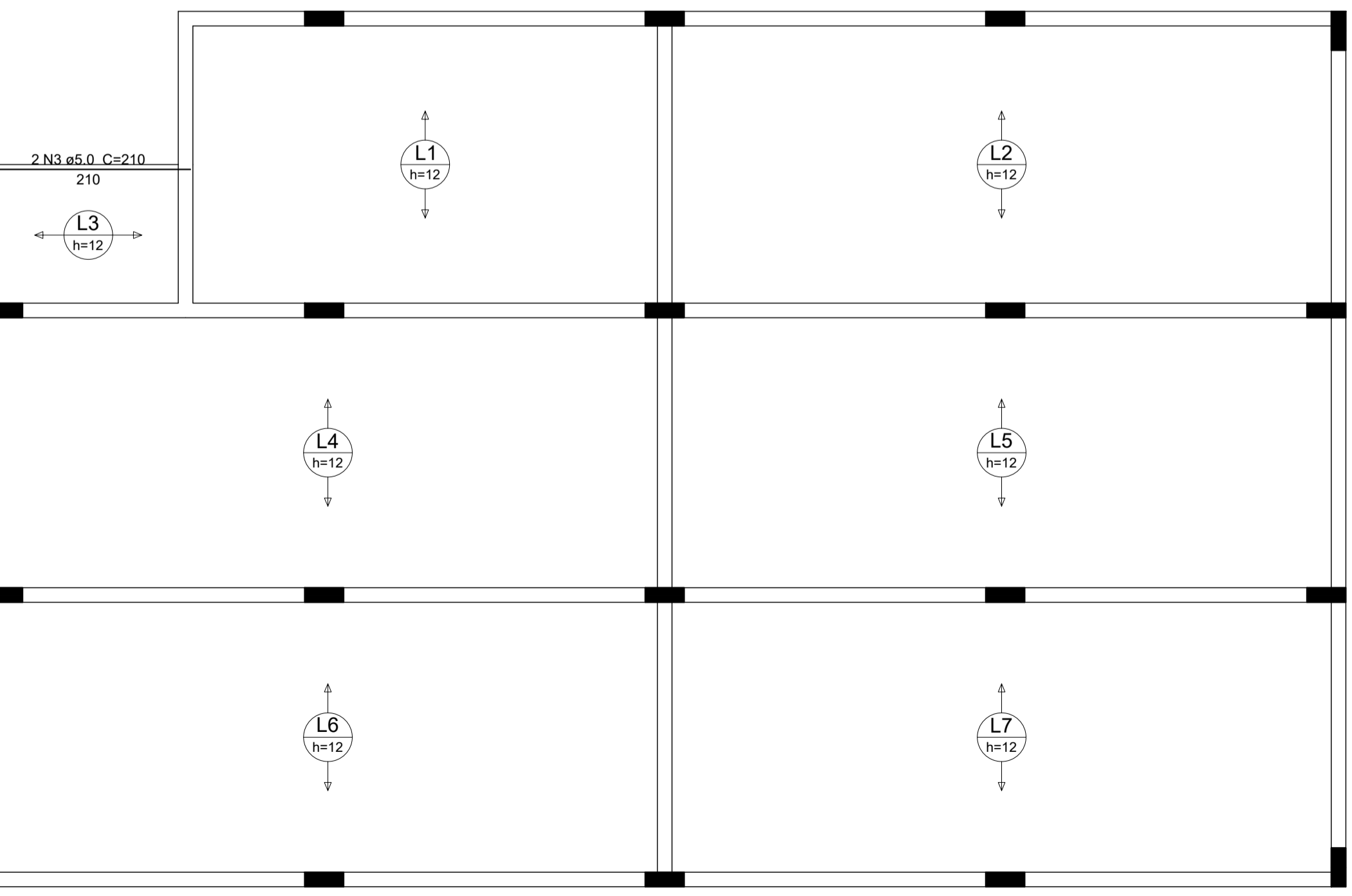


SEÇÃO A-A  
 ESC 1:25

V8  
 ESC 1:50



SEÇÃO A-A  
 ESC 1:25



Relação do aço

AÇO	N	DIAM	Q	UNIT (cm)	C.TOTAL (cm)
CA60	1	5.0	664	98	65072
	2	5.0	300	24	7200
	3	5.0	2	210	420
CA50	4	8.0	2	309	618
	5	8.0	2	359	718
	6	10.0	120	167	20040
	7	10.0	2	1082	2164
	8	10.0	2	164	328
	9	10.0	2	1106	2212
	10	10.0	2	216	432
	11	10.0	2	1037	2074
	12	10.0	2	337	674
	13	10.0	6	894	5364
	14	10.0	6	933	5598
	15	12.5	4	1040	4160
	16	12.5	4	340	1360
	17	12.5	2	1197	2394
	18	12.5	2	318	636
	19	12.5	2	1197	2394
	20	12.5	2	323	646
	21	12.5	2	1197	2394
	22	12.5	2	281	562

Resumo do aço

AÇO	DIAM	C.TOTAL (m)	PESO + 10 % (kg)
CA50	8.0	13.4	5.8
	10.0	388.9	263.7
	12.5	145.5	154.1
CA60	5.0	727	123.2
<b>PESO TOTAL</b>			
CA50		423.7	
CA60		123.2	

Vol. de concreto total (C-25) = 12.82 m³  
 Área de forma total = 117.34 m²

OBJETO:  
**PALCO EM SOURE PA**

PROJETO REFERENTE:  
**ESTRUTURAL**

CONTEÚDO:  
**DETALHAMENTO NIVEL PALCO**

Escala : INDIC.  
 Data : DEZ/2021  
 Área Construída : 192 m²

1 / 3